

Architecture specific SPV layout on a solar powered LTAP

The invention presents a method for contour estimation of solar panel layout on LTAP.

Technology

- The method comprises selecting an array of solar photovoltaic module.
- Further, computing a payload based on the array of solar photovoltaic module selected.
- The method further comprises of calculating a first set of data pertaining to an array,
- wherein the array defines number of plurality of solar photovoltaic module and
- A distribution matrix of the array.
- The method may further comprise computing the payload in a volumetric scale.
- The method may comprise determining a length and a diameter of the LTAP

Fig – 1: Flow chart

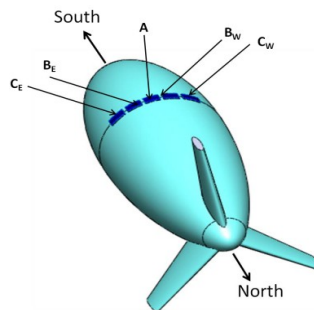
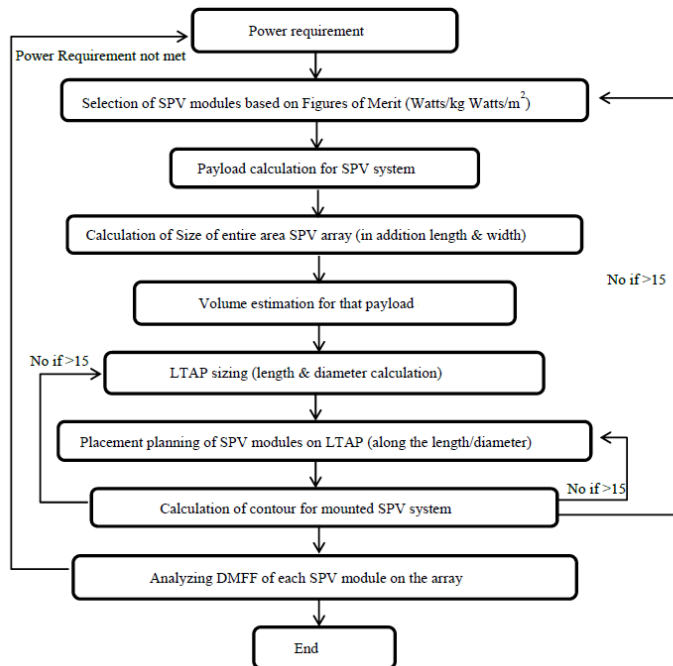


Fig – 2: LTAP

Patent Application No. 471/MUM/2015